

Модуль диодный МДД-300-18



Средний прямой ток						I_{FAV}		300A				
Повторяющееся импульсное обратное напряжение						U_{RRM}		400 - 1800В				
U_{RRM} , В	400	500	600	700	800	900	1000	1200	1400	1600	1800	
Класс по напряжению	4	5	6	7	8	9	10	12	14	16	18	
T_j , °C	-60 ÷ 150											

SYMBOL	CHARACTERISTIC	TEST CONDITIONS	T_j (°C)	VALUE			UNIT
				Min	Type	Max	
$I_{F(AV)}$	Mean forward current	180° half sine wave 50Hz Single side cooled, $T_c=100^\circ\text{C}$	150			300	A
$I_{F(RMS)}$	RMS forward current		150			471	A
V_{RRM}	Repetitive peak reverse voltage	V_{RRM} tp=10ms $V_{RSM} = V_{RRM} + 100V$	150	400		1800	V
I_{RRM}	Repetitive peak current	at V_{RRM}	150			20	mA
I_{FSM}	Surge forward current	10ms half sine wave	150			10	KA
I^2t	I^2T for fusing coordination	$V_R=0.6V_{RRM}$				500	$A^2s \cdot 10^3$
V_{FO}	Threshold voltage		150			0.75	V
r_F	Forward slop resistance					0.55	mΩ
V_{FM}	Peak forward voltage	$I_{FM}=900A$	25			1.35	V
$R_{th(j-c)}$	Thermal resistance Junction to case	At 180° sine Single side cooled				0.130	°C/W
$R_{th(c-h)}$	Thermal resistance case to heatsink	At 180° sine Single side cooled				0.04	°C/W
V_{iso}	Isolation voltage	50Hz, R.M.S, t=1min, $I_{iso}: 1mA(max)$		2500			V
F_m	Terminal connection torque(M8)				12		N·m
	Mounting torque(M6)				6		N·m
T_{stg}	Stored temperature			-40		125	°C
W_t	Weight				860		g
Outline	MTD3						

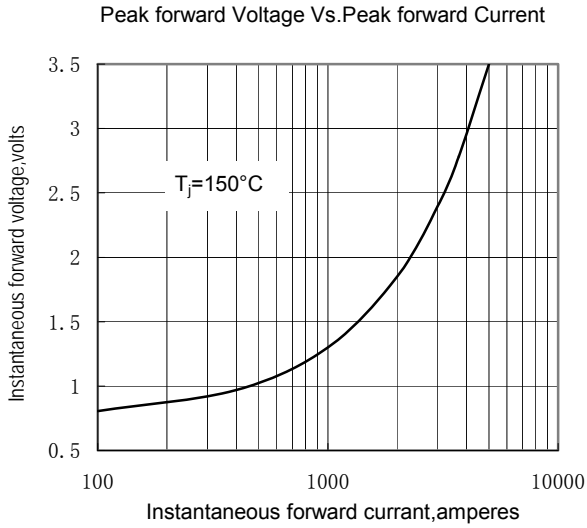


Fig.1

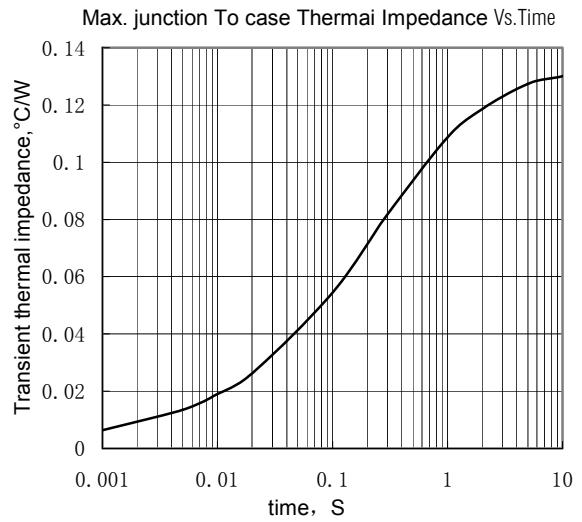


Fig.2

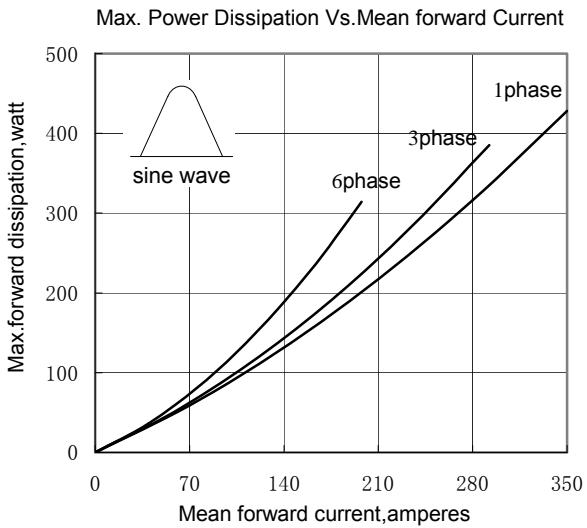


Fig.3

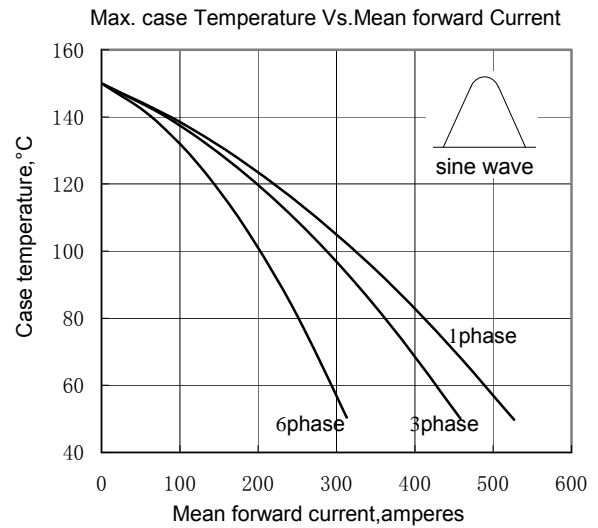


Fig.4

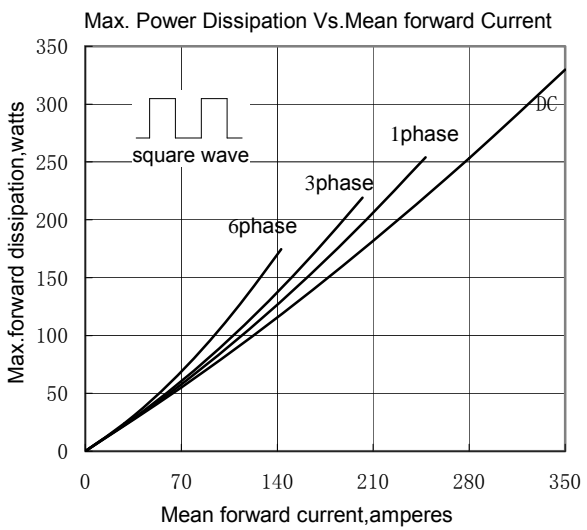


Fig.5

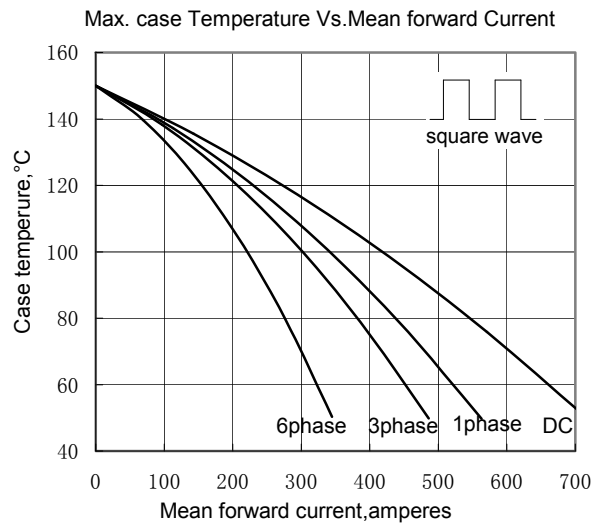


Fig.6

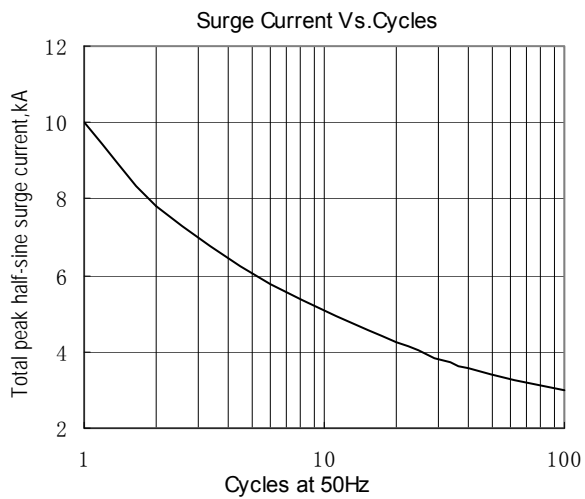


Fig.7

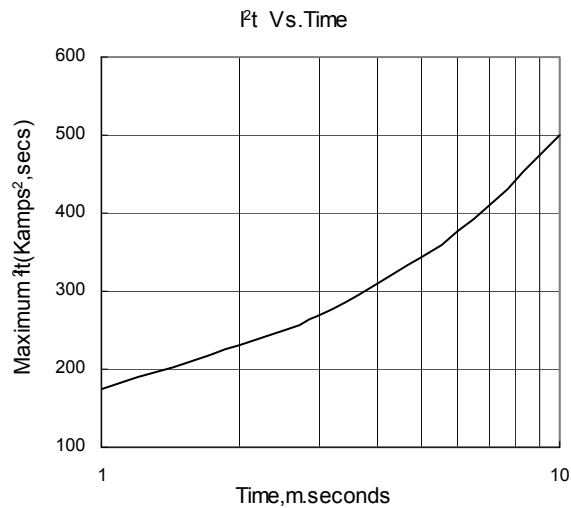
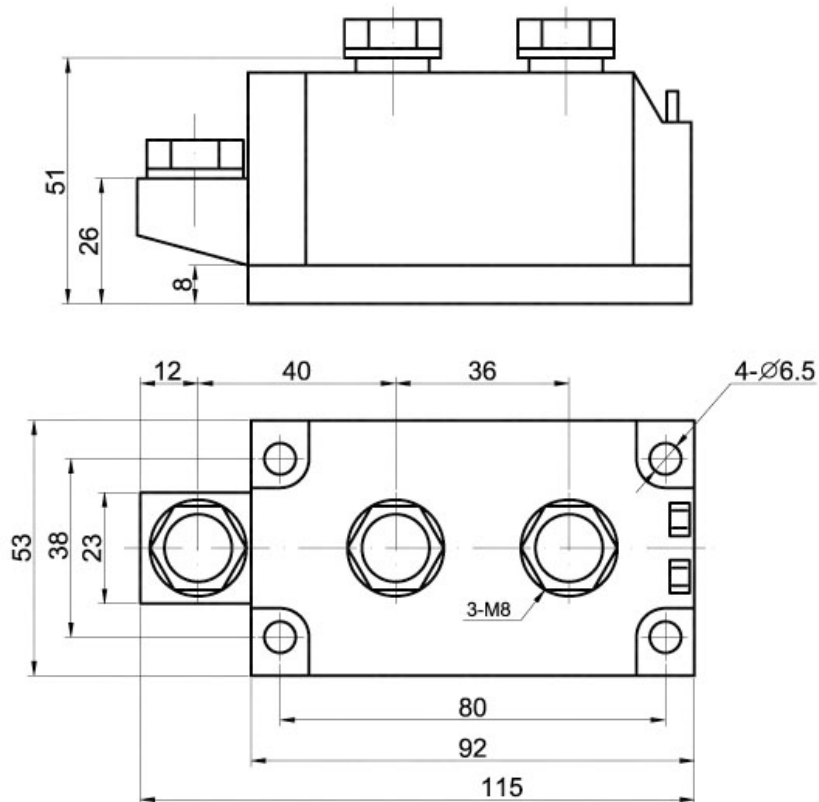


Fig.8

ГАБАРИТНЫЕ РАЗМЕРЫ

Тип корпуса: MDT3



Все размеры в миллиметрах



1- Анод/Катод, 2 -Катод, 3- Анод